

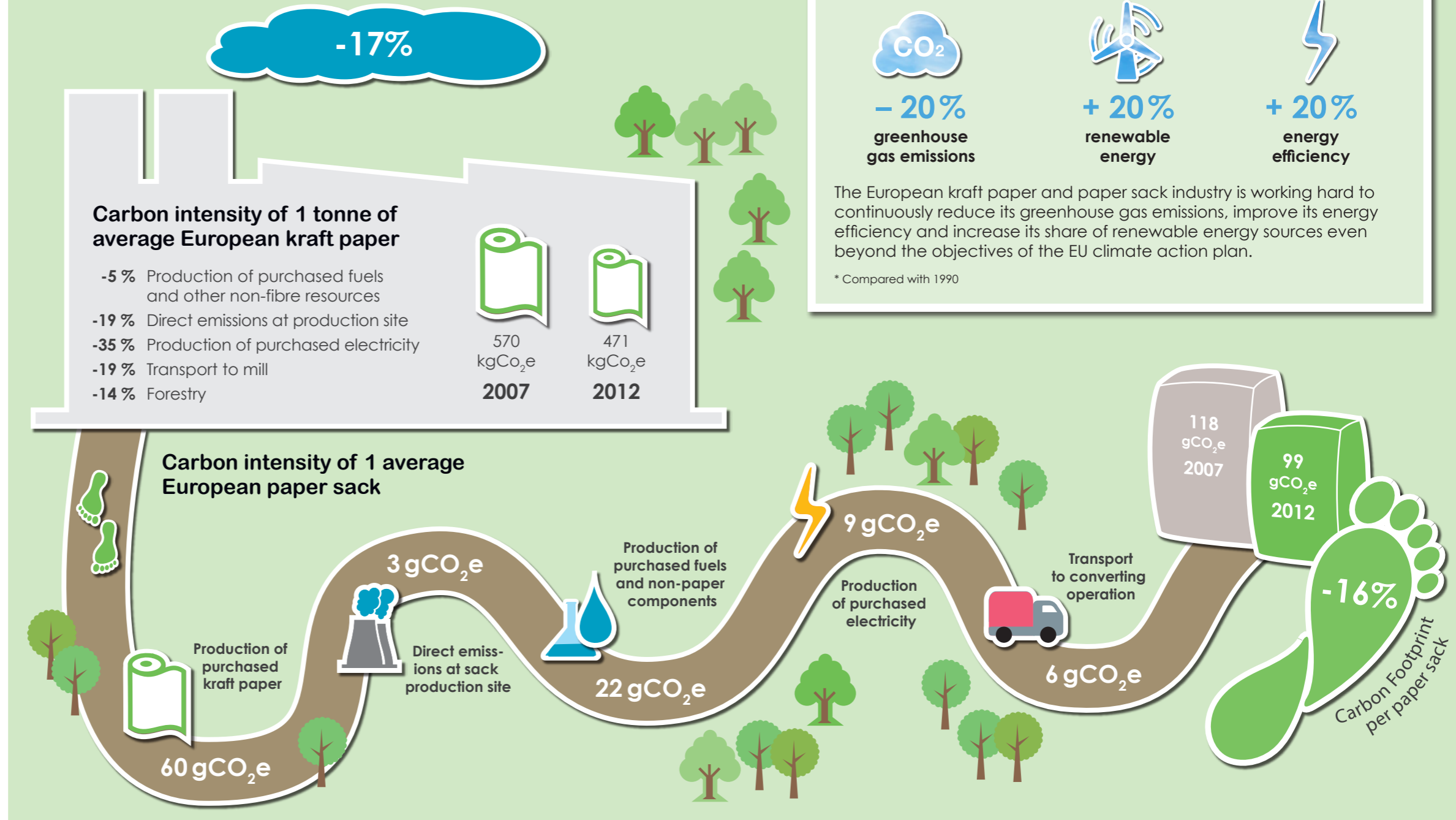
# CO<sub>2</sub> FOOTPRINT OF THE EUROPEAN PAPER SACK

Between 2007 and 2012, the European kraft paper and paper sack industry made continued and significant improvements to its carbon footprint:

- ✓ The carbon intensity of 1 tonne of average European kraft paper – which accounts for 60% of the carbon footprint of a paper sack – was optimised by 17%.
- ✓ In the further course from cradle to gate, the overall carbon intensity of one individual paper sack has improved by 16%, partly due to lightweighting efforts.

Extending the analysis to include additional aspects would give an even more complete picture of the carbon footprint of European paper sacks.

- ✓ Taking into account end-of-life emissions and any benefits arising from emissions avoided due to recovery and waste management activities reduces the carbon footprint per average European paper sack to 70 gCO<sub>2</sub>e (instead of 99 gCO<sub>2</sub>e).
- ✓ It is a well-known fact that forests sequester and store carbon. The sustainable management and growth of forest areas in Europe is a central element of the value chain for paper sacks. If the increasing biomass in Europe's forests were considered in the calculation, the carbon footprint would actually be negative, at -282 gCO<sub>2</sub>e per sack.



The results presented are based on a study conducted by the Swedish research institute Invenia on behalf of:



[www.eurosac.org](http://www.eurosac.org)  
[www.cepi-eurokraft.org](http://www.cepi-eurokraft.org)

**CEPI EUROKRAFT**  
European Producers of Sack Kraft Paper and Kraft Paper

**Performance powered by nature.**

## Impact of improvement

Comparing the results for 2007 to those for 2012, the total CO<sub>2</sub>e improvement for one year\* equals



» about 17,300 circumnavigations around the globe\*\*



» the emissions due to consumption (food, living, travel etc.) produced by a small town of about 10,600 people per year\*\*\*

\* About 5 billion paper sacks are produced per year in Europe by EUROSAC's members. Due to the improvements in the carbon footprint from 2007 to 2012, emissions fell by 95,000 tCO<sub>2</sub>e. \*\* Considering that the average CO<sub>2</sub> emissions of a newly registered passenger car are 137 g/km, this equals 693 million passenger car kilometres. \*\*\* On average, 8,9 tCO<sub>2</sub>e are produced per capita in Europe in 2012.

## Good to know

Sustainably managed forests act as a carbon sink. 1 m<sup>3</sup> of wood captures 1 t of carbon dioxide while emitting 0.7 t of oxygen.



## What is CO<sub>2</sub>e?

CO<sub>2</sub> equivalent (CO<sub>2</sub>e) is a measure for describing how much global warming a given type and amount of greenhouse gas may cause, using the functionally equivalent amount or concentration of carbon dioxide (CO<sub>2</sub>) as a benchmark.